



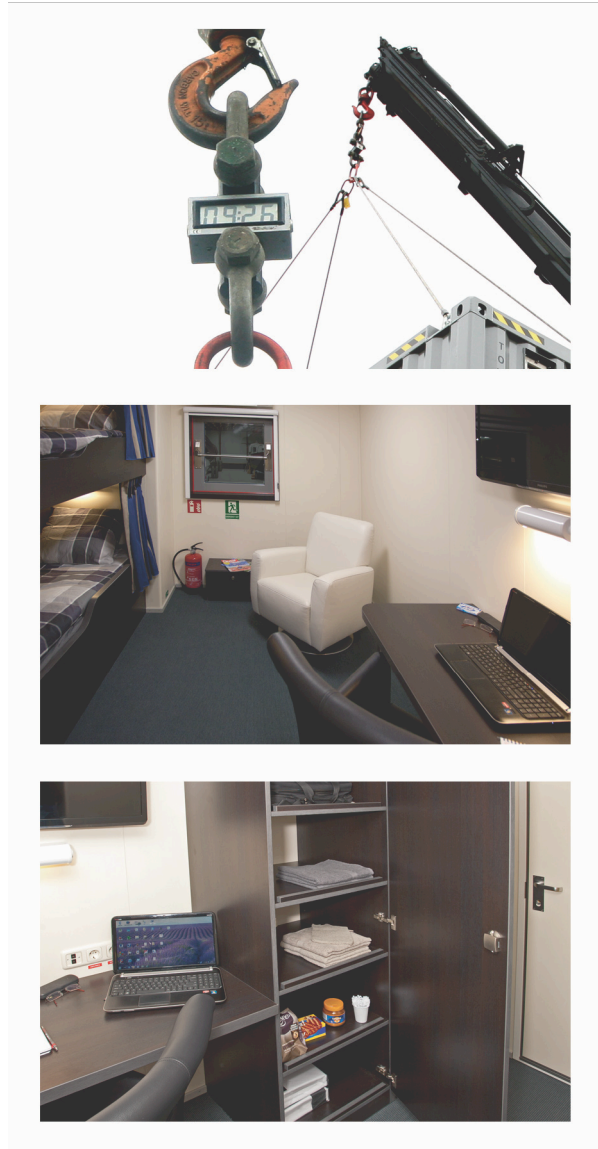
SPECIFICATION SHEET 33FT

10.1 M (33 x 11 x 10 FT) Accommodation Module

A60 Offshore Accommodation Modules offering Safe and Comfortable living for 4-8 persons.

Specifications:

- Certified to DNV 2.7-1 / DNV2.7-2 / EN 12079
- Lloyd's Certification Scheme (Zone II optional)
- Airlock System – overpressurized cabins
- 2 x Bunk Bed
- Lockers including shelving, open top
- En Suite Shower room
- HVAC -15° / +35° C
- Fire & Gas unit (standard PLC in CPGF)
- High quality fixtures
- Plug and Play, Linkable Hook Up
- Stacking 4 high fixed by twist lock
- Manufactured in house to ISO 9001
- Modules available for hire or sale



Titan Offshore Modules NL

Tel: +31 (0) 20 820 23 38

Tel: +31 (0) 62 246 25 49

Tel: +31 (0) 65 171 77 36

info@titanmodules.com

www.titanmodules.com

Dimensions

LOA 10.1m x WOA 3.35m x HOA 3.04m

Weight

9.000 Kg

Certification

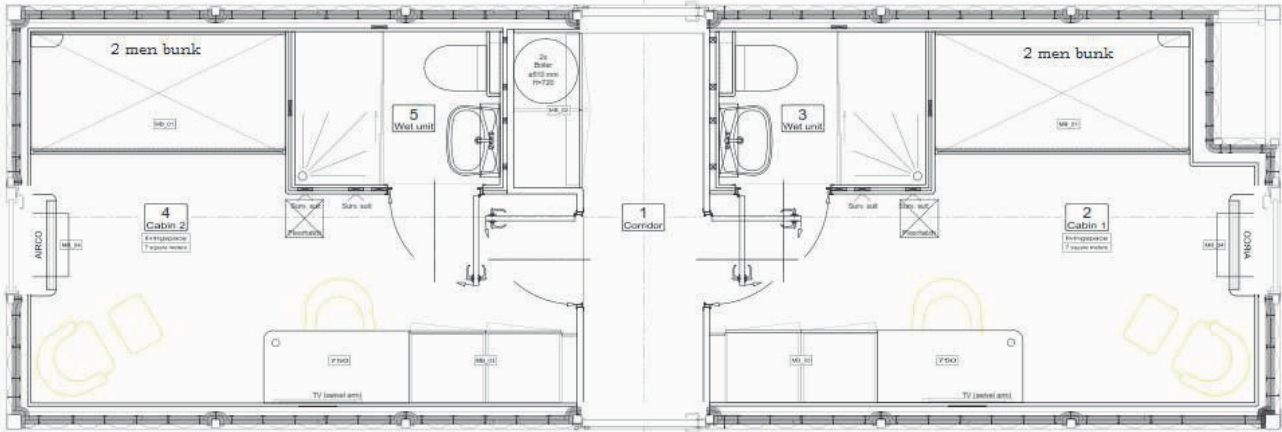
IMO-/SOLAS A60, DNV 2.7-1 / DNV 2.7-2 / EN 120709



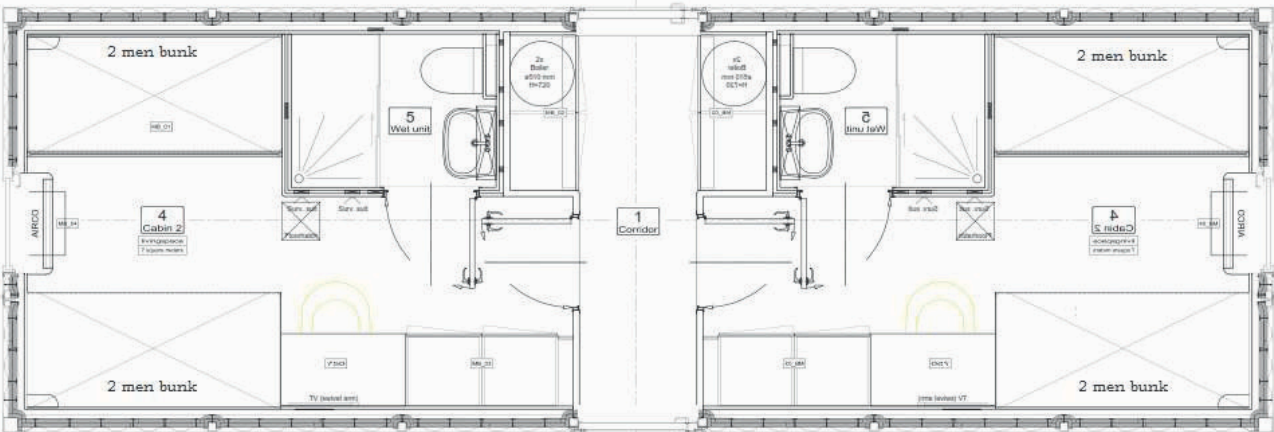


SPECIFICATION SHEET

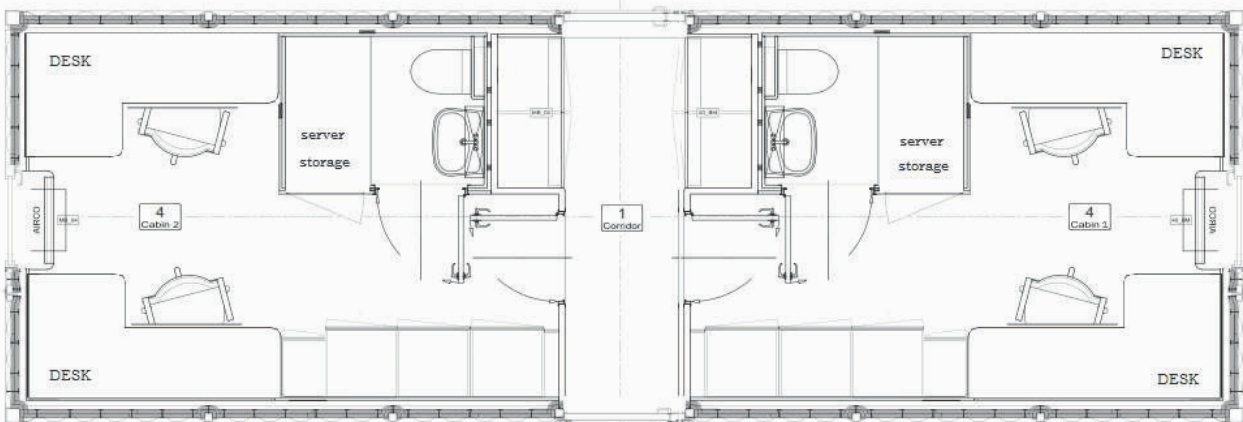
Indicative Floorplan 33 FT



4 Men Sleeper



8 Men Sleeper



Office

